

## PIEPER IS A Team Player.



**Working together toward a common vision.** This is the essence of a team, whether they're a group of athletes trying to win the World Series, or they're an electrical contracting company providing quality workmanship for clients. Without the joint efforts of every member of the team, the vision will not be realized. Pieper-Houston Electric is here to help our clients' visions become a reality.

The success of Pieper-Houston Electric results from our employees, who are committed to playing for the team. From the most complex technical aspects of a project, to organization, logistics and labor, our team works hard to ensure our clients are getting the best of the best. It's this cohesion that makes tough projects run seamlessly. It's this type of teamwork that overcomes bumps in the road, and ensures the highest levels of workmanship. It's this brand of Pieper teamwork that leaves a lasting impression with our clients.

**Pieper-brand teamwork has made Pieper-Houston Electric a success for more than 55 years.**



LOOKING FOR PHOTOS  
we took at a recent event?

Check them out by following  
us on Flickr and LinkedIn!

## MAKING STRIDES AT: Sugar Land Performing Arts Center

**smart financial centre**  
at Sugar Land



Since December of 2014, Pieper has been hard at work on Sugar Land's brand new performing arts center, set to open early 2017. The **Smart Financial Centre**, as it has been named, will host a variety of entertainers and performances, including Reba McEntire and The Lumineers, who are booked for shows in 2017.

Catering to the needs of a performance venue, Pieper provided the electrical infrastructure, including specialty color changing lighting

throughout the facility and DMX lighting control, as well as fire alarms, structured cabling, security-cameras and access control.

The facility exceeds 200,000 square feet, including multi-level seating and a basement. The venue marks its Grand Opening with a celebration starring Jerry Seinfeld on January 14, 2017, and a sneak preview holiday show featuring Cirque Musica will be held December 18.

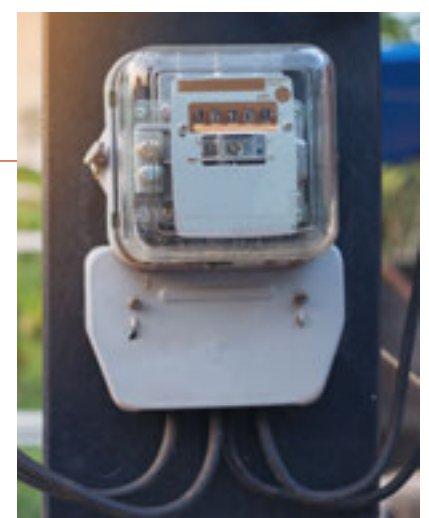
**Pieper's Project Manager:** Reno Luxardo  
**Pieper's Project Foreman:** Gilbert Gonzales

**General Contractor:** Linbeck Construction  
**Engineering Firm:** CEG Engineers  
**Architect:** Martinez+Johnson Architecture

## LOWER YOUR electric bill.

Found on your monthly statement or by calling your provider, the **power factor** is the difference between the available power and how much you actually use. Power companies often charge for all the energy running through your power lines, instead of only the power your building uses. Pieper's technicians can install capacitor banks, which reduce your power factor and ultimately lower your bill.

Call us and schedule an assessment today! **713.984.9342**



## TEST YOUR brain power

**Q** What units do electric companies generally use to measure how much power you use?

**SUBMIT YOUR GUESS »**



Answer our monthly trivia question correctly and you'll be entered to win a Starbucks Gift Card.

**Congratulations** to last month's trivia winner, **OSCAR GALLEGOS**. We hope you enjoy your gift card!



## A WALK in their shoes

**RENO LUXARDO** | PROJECT MANAGER

**Time with Pieper:** Ten years  
**Favorite Sports Team:** Chicago Cubs  
**Favorite Type of Shoes:** Tennis shoes  
**Favorite Way to Spend Free Time:**  
With my family



## FOR ALL YOUR ELECTRICAL NEEDS:

- Design/Build and Design/Assist
- Electrical Engineering & Design
- Prefabrication
- Cost-Estimating Services
- Electrical Construction Management
- Lighting Maintenance, Inspection & Design
- Energy Saving Lighting Updates
- Infrared Inspection
- Power Quality Analysis & Energy Efficiency Reviews

**AMERICAN  
SUBCONTRACTORS  
ASSOCIATION  
HOUSTON CHAPTER**  
**PROUD MEMBER**